

## Using the EnviroAtlas Educational Curriculum

All lesson plans are hands-on and align with educational standards. They were piloted and tested by classroom teachers, students, and science educators.

- **Grades K-6: "Exploring Your Watershed"**  
Students create a model watershed and then use maps to follow a raindrop's path from their school.
- **Grades 4-6: "Introduction to Ecosystem Services"**  
Six 30-minute mini-lessons introduce the concept of ecosystem services.
- **Grades 4-12: "Connecting Ecosystems & Human Health"**  
Students use the Eco-Health Relationship Browser and string to explore connections between the environment and human health.
- **High School and Up: "Building a Greenway: Case Study"**  
In this case study, students use evidence from maps to decide where to put a Greenway in a hypothetical town.



## About

EnviroAtlas was developed collaboratively by EPA in partnership with the U.S. Geological Survey (USGS), the U.S. Department of Agriculture (USDA), and other federal and non-profit organizations, universities, and communities, including state, county and city-level stakeholders.

EnviroAtlas is available to anybody with a computer and an internet connection. No special software is needed.

## Contact Us

Anne Neale  
EnviroAtlas Project Lead  
Environmental Protection Agency  
Email: [EnviroAtlas@epa.gov](mailto:EnviroAtlas@epa.gov)  
Web: [www.epa.gov/enviroatlas](http://www.epa.gov/enviroatlas)

## Access Our Materials

<http://bit.ly/EPAEnviroAtlasED>



EDUCATOR'S GUIDE



Connecting people, human health,  
ecosystems & the economy

[www.epa.gov/enviroatlas](http://www.epa.gov/enviroatlas)



United States  
Environmental Protection  
Agency



## What is EnviroAtlas?

EPA and partners have developed EnviroAtlas — an interactive web-based tool that states, communities, and citizens can use to help inform policy and planning decisions that impact the places where people live, learn, work and play.

EnviroAtlas combines maps, analysis tools, fact sheets, and downloadable data into an easy-to-use, web-based resource that allows users to understand the implications of various decisions and their potential impacts on ecosystems.

## Educational Curriculum

- Designed to align with NGSS and individual State Science Standards
- Has guidelines for using EnviroAtlas to develop your own lesson plans that match your specific classroom needs

Relevant classroom courses include:

- Biology/Life Science
- Health
- Earth Science
- Environmental Science
- Ecology
- Geography/GIS
- City and Regional Planning



Participants in the String Activity, which is part of the EnviroAtlas Eco-Health Lesson

## Tools in EnviroAtlas

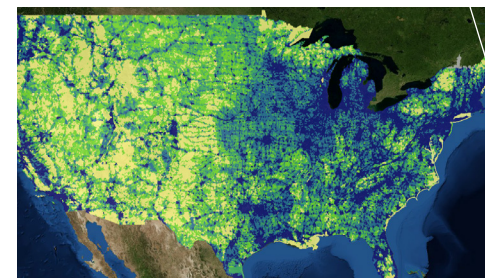
Providing 400+ maps, the Interactive Map allows users to investigate various ecosystem elements and compare them across the US. Available maps range from fine-scale community extent (middle) to broad-scale national extent (top right).

The **Interactive Map** contains multiple tools that could be used in a classroom setting:

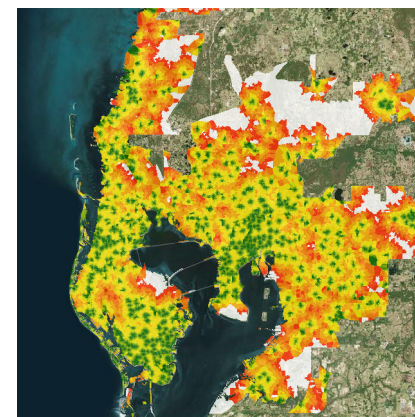
- The **HUC Navigation Tool** allows students to navigate up- and down-stream along waterways with a single click on a start location.
- The **Raindrop Tool** allows students to follow the path of a raindrop from any point to the nearest downstream waterbody.
- The **Elevation Profile Tool** can be used to explore topographic variation.

## The Eco-Health Relationship Browser

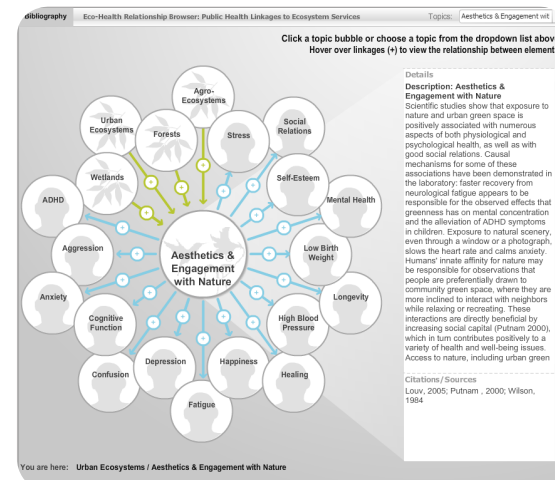
Students can use the Eco-Health Relationship Browser to explore explore literature on the linkages between ecosystems, the services they provide, and their impact on human health and well-being (shown right).



Percent Impervious Area at the National scale



Estimated walking distance to a park entrance in the Tampa, Fla. area. (green indicates shorter distance)



The Eco-Health Relationship Browser, showing ecosystems that provide Aesthetics & Engagement with Nature and associated health outcomes.