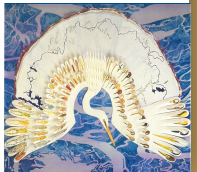


Measuring our Success: Updates from the Habitat Workgroup

Working toward a healthy river ecosystem
supporting a thriving human community

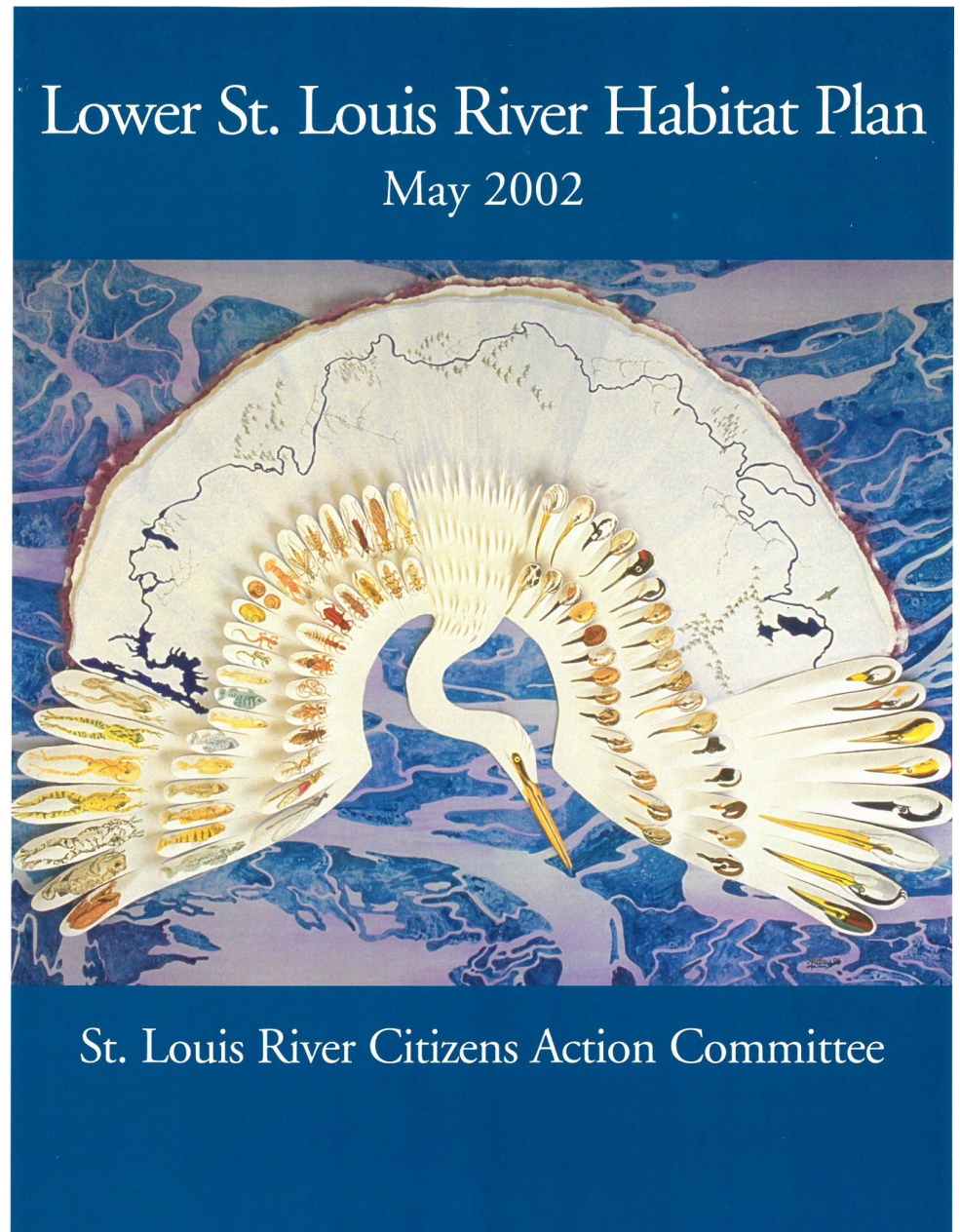
Hannah Ramage, Rick Gitar, Brandon Krumwiede, Dara Fillmore, Tom
Hollenhorst, Molly Wick and Pat Collins



Lower St. Louis River Habitat Plan 2002

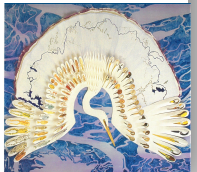
- Identified Conservation Targets
- Identified Threats to the St. Louis River Estuary
- Identified Strategies to Mitigate Threats

Cover Art: Spirit of the Earth's Rivers, Jan Wise



Vision

The vision for the Lower St. Louis River is a thriving human community connected to the aquatic and terrestrial ecosystems of the river. The river ecosystems are diverse, productive, and healthy, with natural processes (such as hydrologic regimes, biological productivity, and nutrient cycling) operating within the natural range of variation. The diversity of plants and animals and the composition of natural communities present at the time of European settlement is reflected in the sustainable ecosystems of today.



Strategies

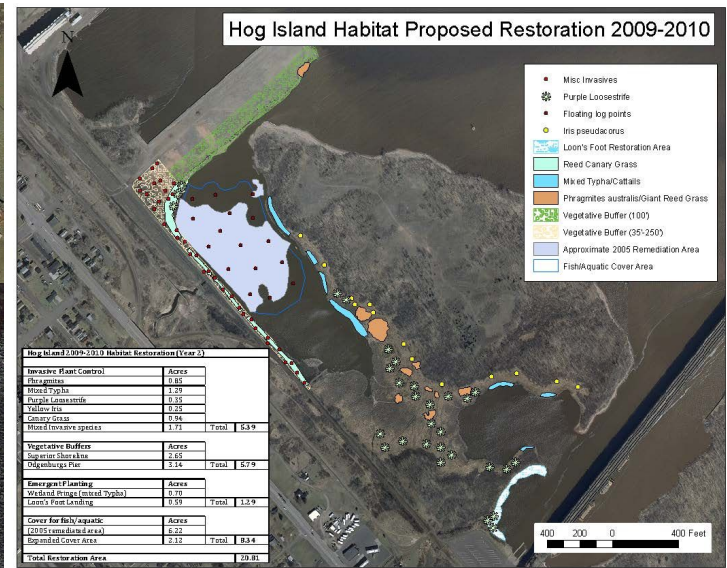
Radio Tower Bay – before restoration



Radio Tower Bay – after restoration

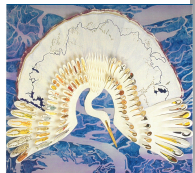


Hog Island Habitat Proposed Restoration 2009-2010



Examples:

- Protect Critical Remaining Natural Areas
- Remediate Contaminated Sediments
- Identify and Track Priority Restoration Projects



How Are We Doing?

Strategy

Project #

Title

Habitat type

Contacts

Status (complete, in progress, planned, not yet planned)

Year initiated

Year completed

RAP action item - (Y or N)

Success - (complete, partial, none)

Sediment assessment area

GIS layer available

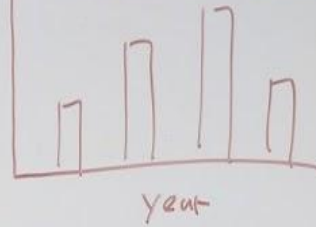
Area

Anticipated cost \$

Final cost \$

State of the SLR Estuary

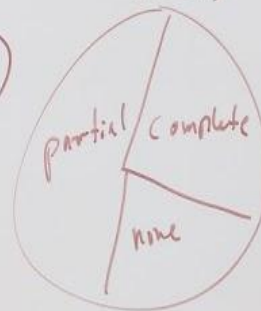
area



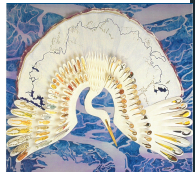
Status



Success



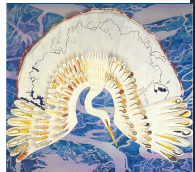
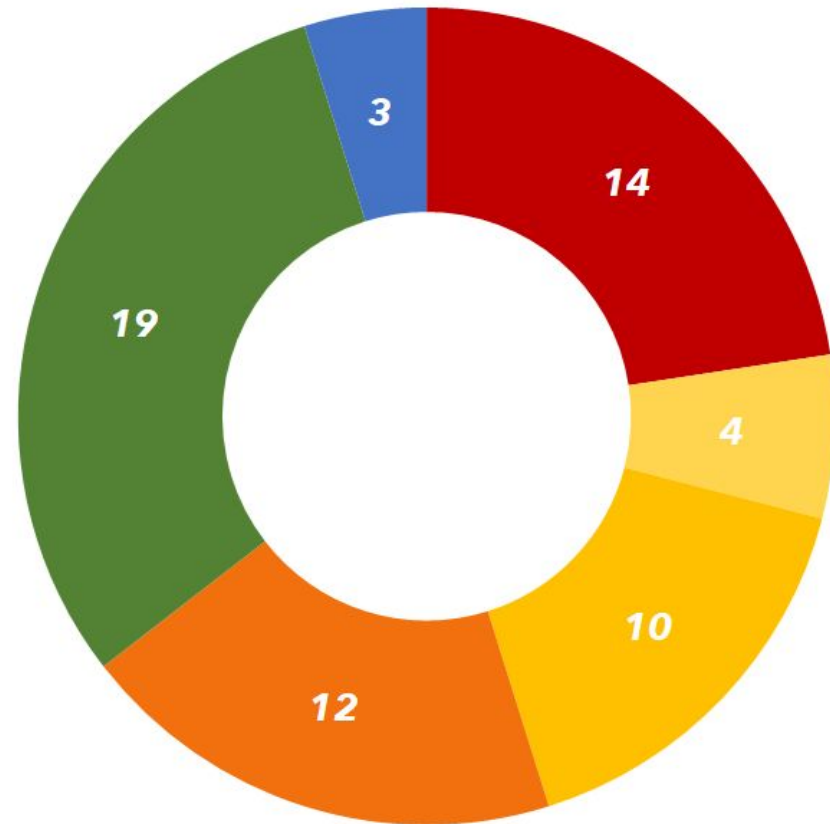
Cost



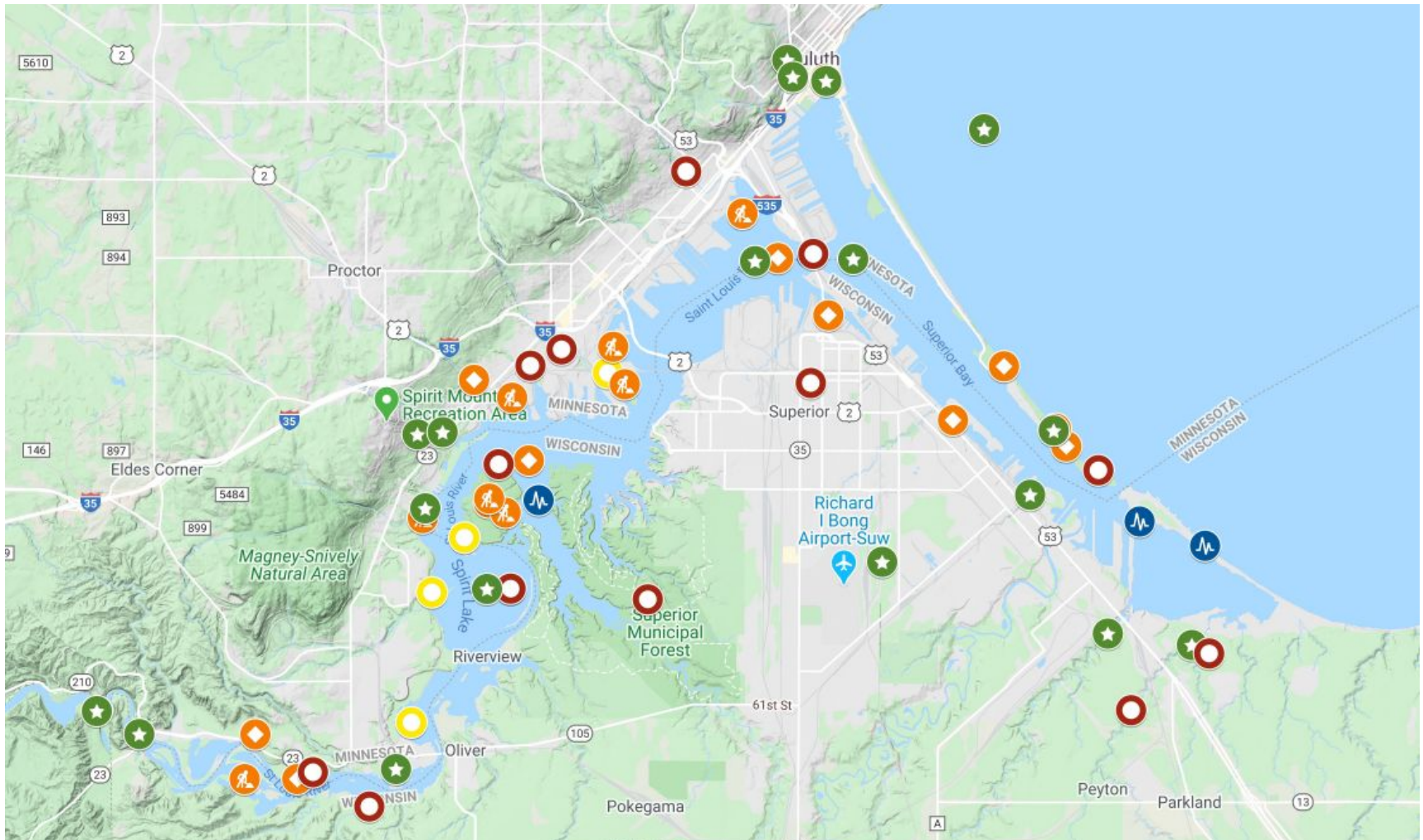
How Are We Doing?

Project Status

- Not Yet Planned
- Planning
- In Progress - Design
- In Progress - Construction
- Complete
- Maintenance/Monitoring

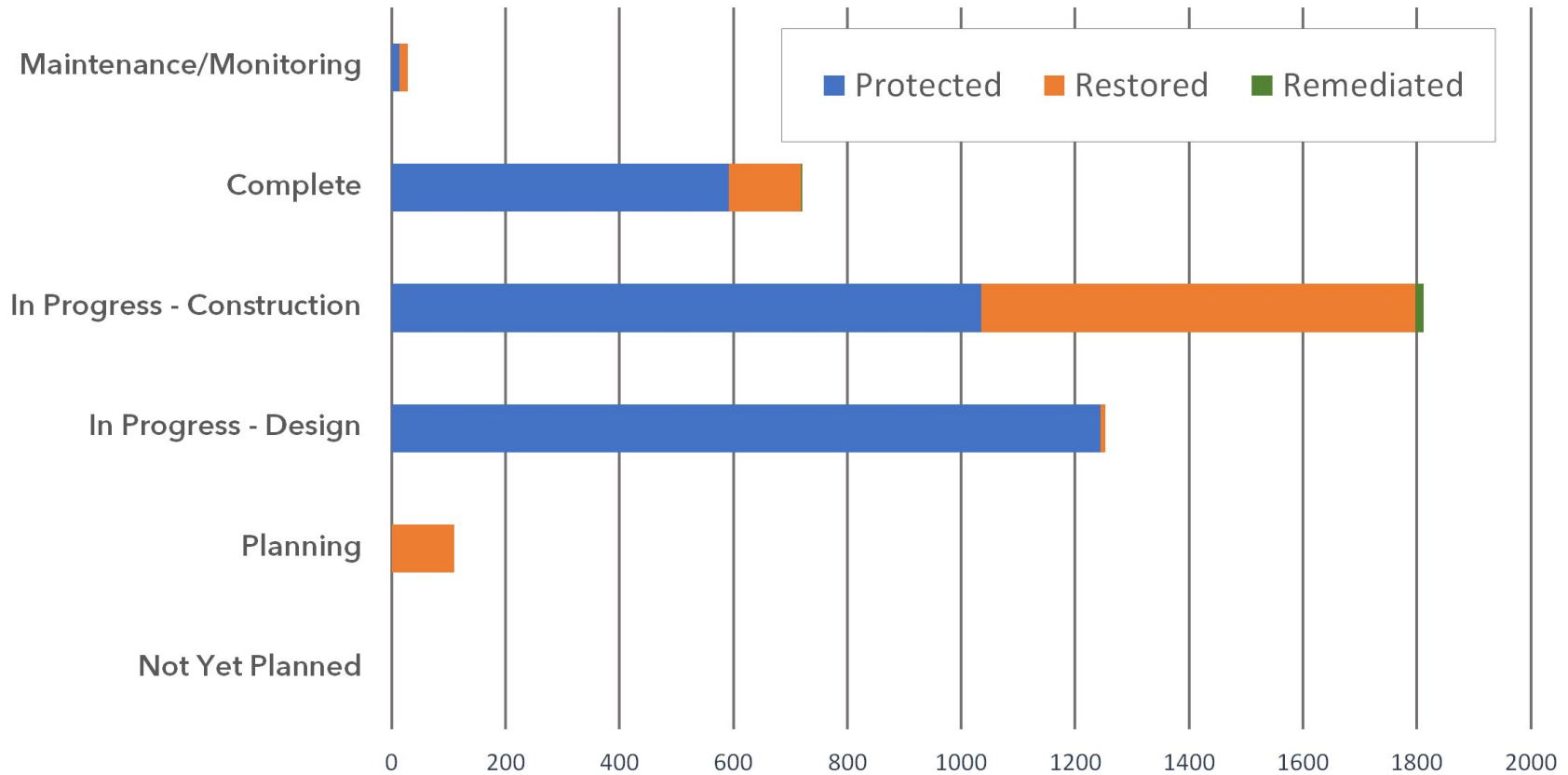


How Are We Doing?

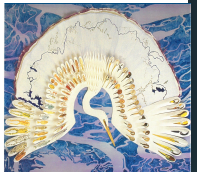


How Are We Doing?

Project Acres

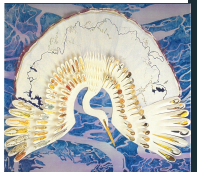
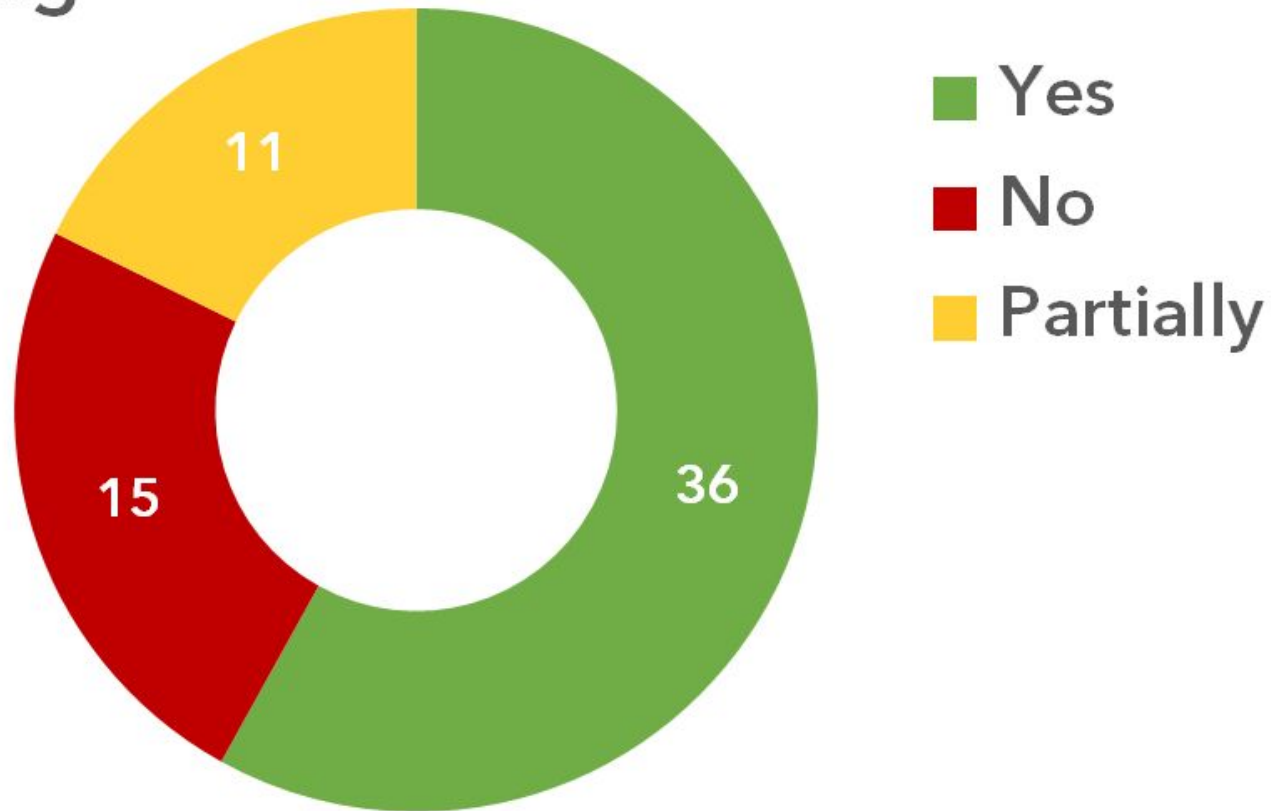


Total Acres Protected: 2885



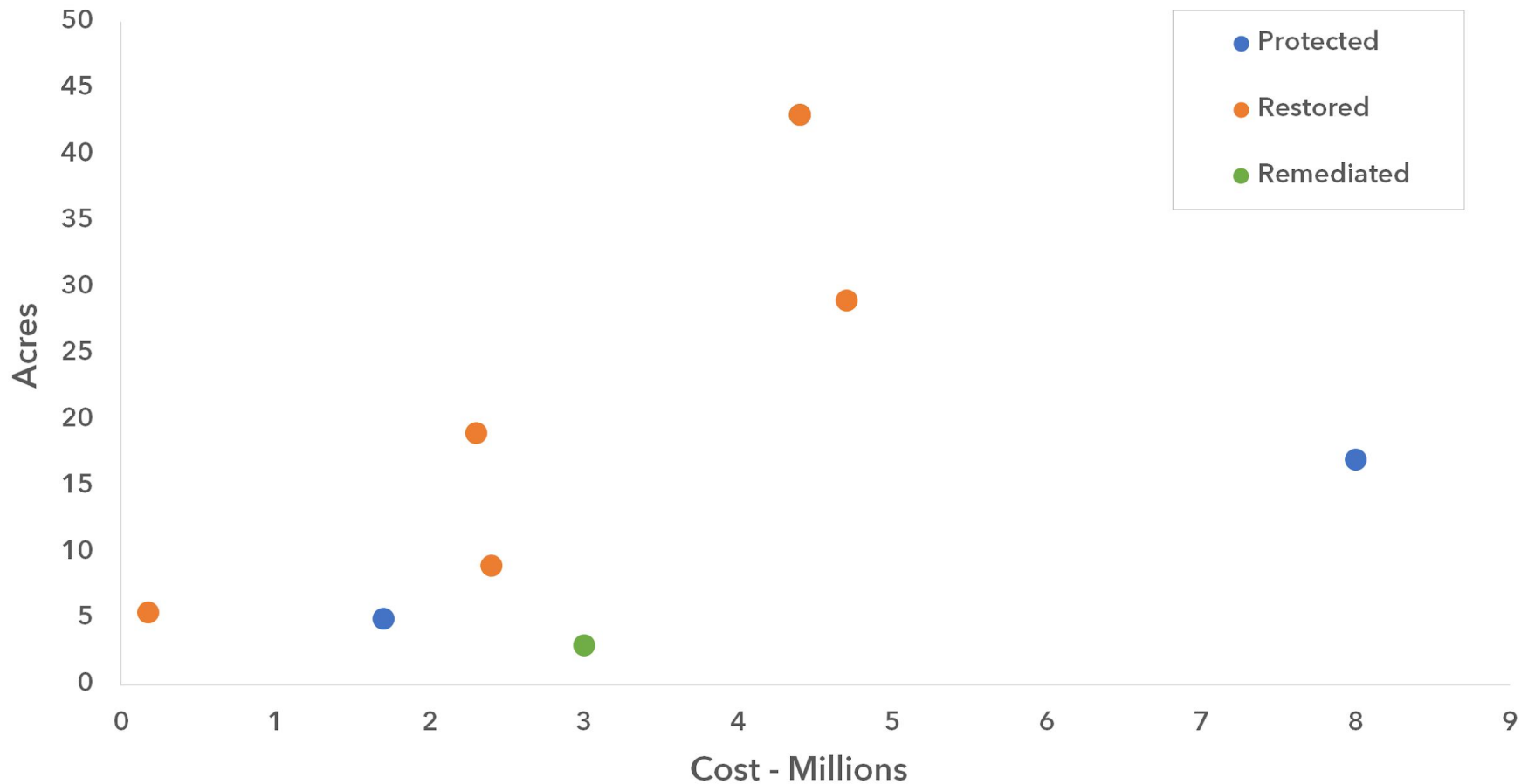
How Are We Doing?

Funding

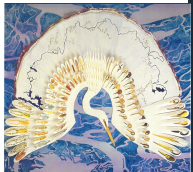


How Are We Doing?

Cost vs Acres



Total Cost of Projects \$32,975,000.00



What's Next?

- Finish the status report - collaborative webpage
- Evaluate the unfunded and unplanned projects
- Re-prioritize and identify additional projects

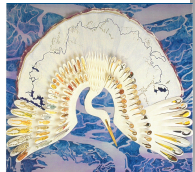


Welcome to the St. Louis River Habitat Workgroup

The vision for the Lower St. Louis River is a thriving human community connected to the aquatic and terrestrial ecosystems of the river. The river ecosystems are diverse, productive, and healthy, with natural processes (such as hydrologic regimes, biological productivity, and nutrient cycling) operating within the natural range of variation. The diversity of plants and animals and the composition of natural communities present at the time of European settlement is reflected in the sustainable ecosystems of today.

We Need Your Data

[Report your Habitat Project Here](#)



Call to Action

Do you.....

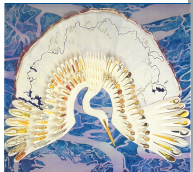
- have a habitat protection, restoration, or remediation project within the St. Louis River watershed?
- wonder if your project is in or should be included in the Habitat Plan?
- love collaborative data efforts?

Then...

Join us!

Contact:

Hannah Ramage
hannah.ramage@wisc.edu



Participating Organizations

- 1854 Treaty Authority
- AMI Consulting Engineers
- Bayfield County - Land and Water Conservation
- Carlton Soil and Water Conservation District
- City of Duluth - Department of Public Administration
- City of Duluth - Natural Areas Program
- City of Duluth - Parks Department
- City of Superior - Department of Parks, Recreation, and Forestry
- City of Superior - Environmental Services
- Douglas County - Land Conservation
- Environmental Protection Agency - Great Lakes Toxicology and Ecology Division
- Fond du Lac Band of Lake Superior Chippewa - Resource Management
- Honor the Earth
- Lake Superior National Estuarine and Research Institute
- Minnesota Board of Soil and Water Resources
- Minnesota Department of Natural Resources - Division of Ecology and Water Resources
- Minnesota Department of Natural Resources - Division of Fish and Wildlife
- Minnesota Land Trust
- Minnesota Pollution Control Agency
- Minnesota Sea Grant
- National Oceanic and Atmospheric Administration - Office for Coastal Management
- South St. Louis Soil and Water Conservation District
- St. Louis River Alliance
- Trout Unlimited
- United States Army Corps of Engineers
- United States Fish and Wildlife Service
- University of Minnesota Duluth
- University of Minnesota Duluth - Natural Resources Research Institute
- University of Wisconsin Madison - Division of Extension
- University of Wisconsin Superior - Lake Superior Research Institute
- Western Lake Superior Sanitary District
- Wisconsin Department of Natural Resources - Environmental Management Division
- Wisconsin Department of Natural Resources - Fish, Wildlife, and Parks Division
- Wisconsin Landmark Conservancy
- Wisconsin Sea Grant

