

# Integrative Biologically Based Model for Thyroid Hormones Disruption in Fetal and Neonate Serum and Developing Brain

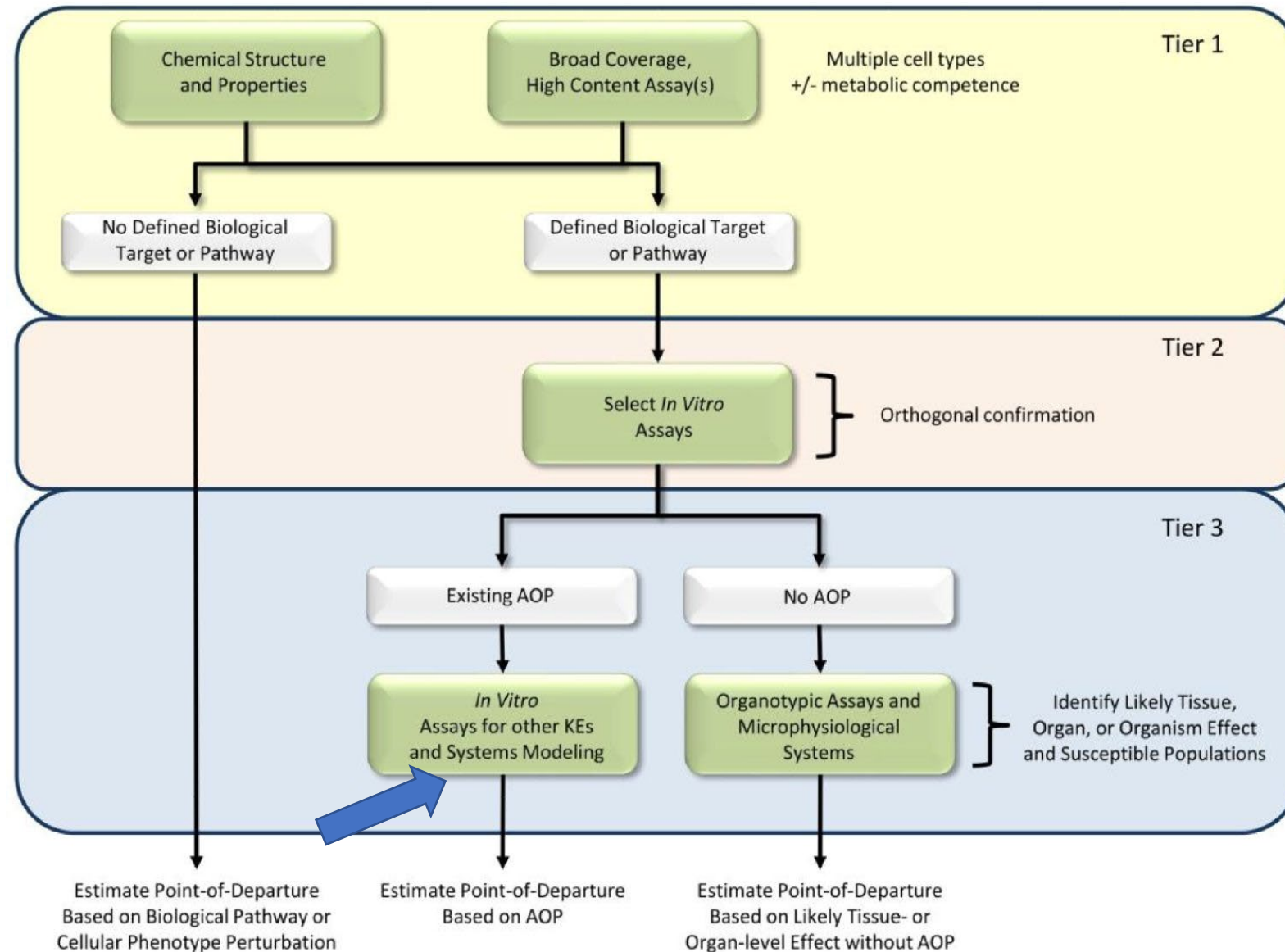
Hisham El-Masri, Ph.D.

U.S. Environmental Protection Agency

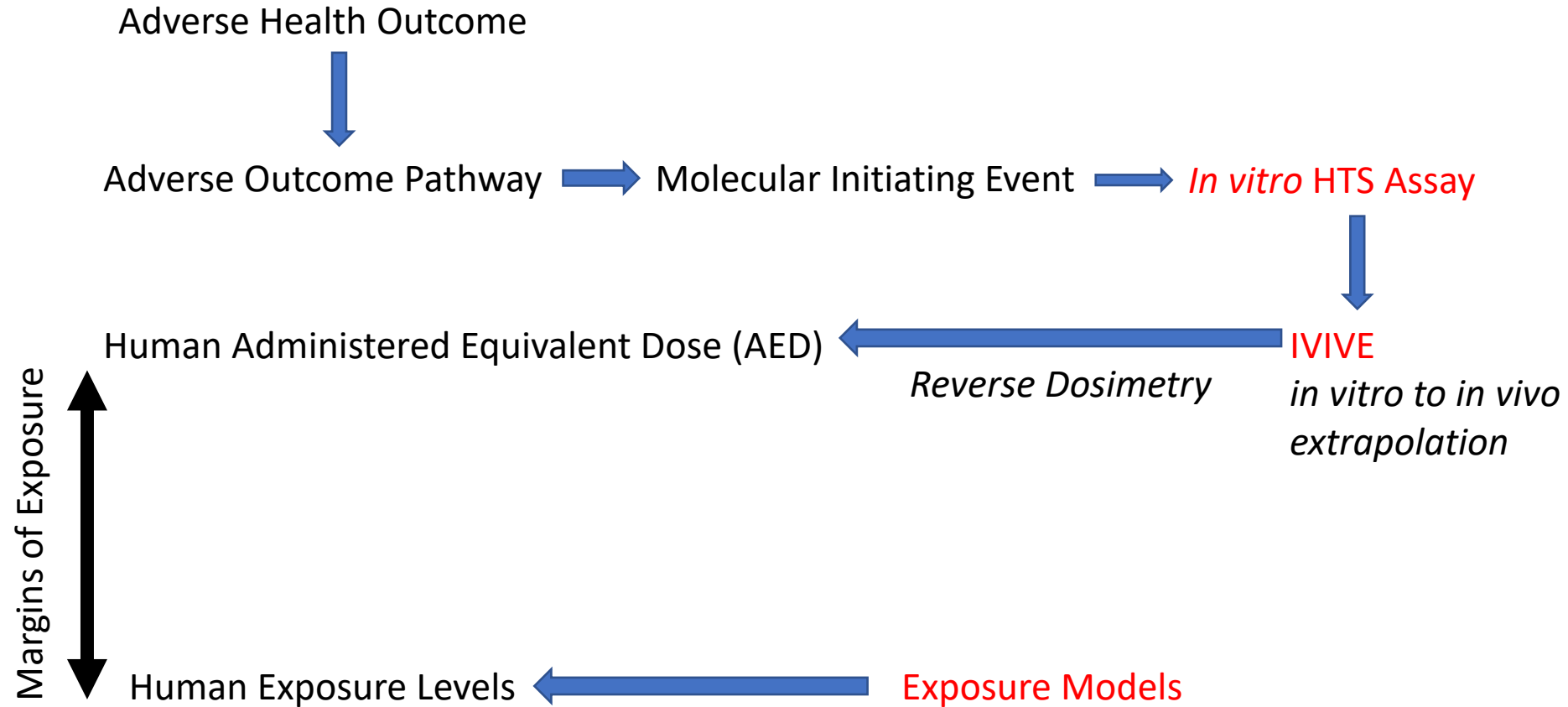
ORD/CCTE/CCED/CETB

DISCLAIMER - This presentation was reviewed by the Center for Computational Toxicology & Exposure, Office of Research and Development, U.S. Environmental Protection Agency, and approved for publication. Approval does not signify that the contents reflect the views of the Agency, nor does mention of trade names or commercial products constitute endorsement or recommendation for use.

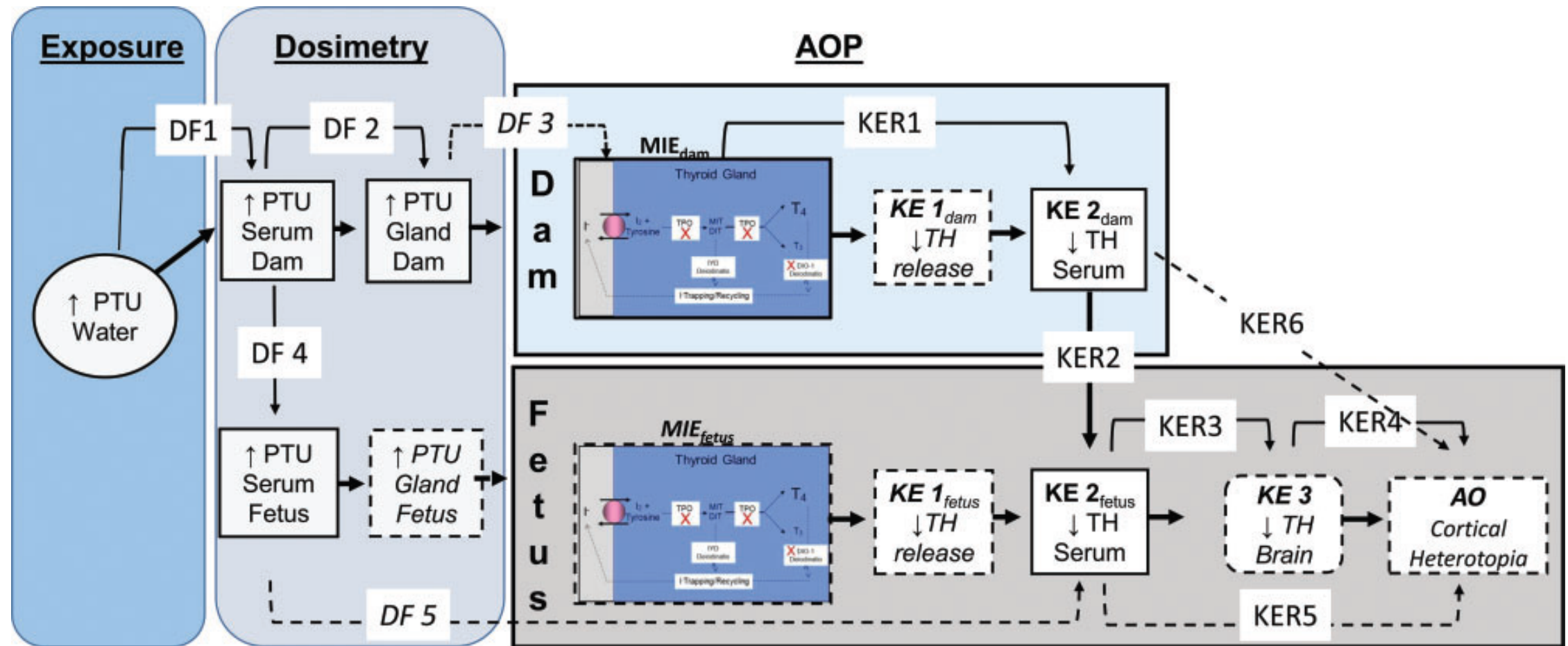
# The next generation blueprint of computational toxicology at the U.S. Environmental Protection Agency. *Thomas et al. 2019*



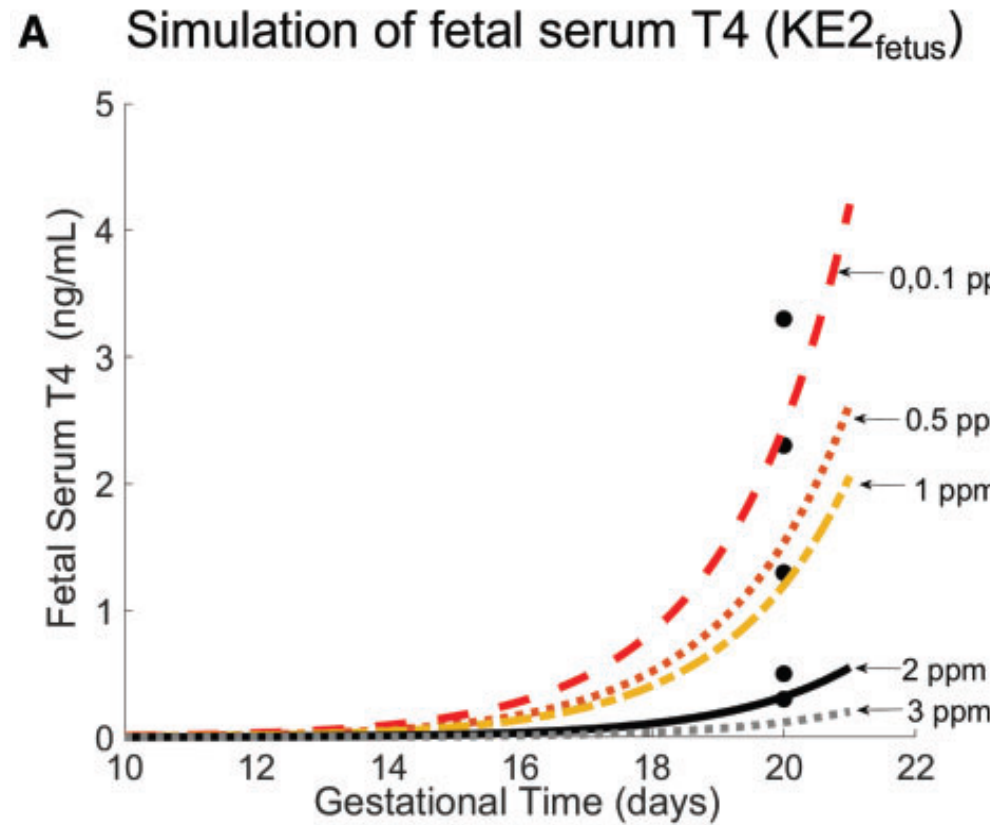
# Systems Modeling for Estimations of AOP-Based Margin of Exposures. *El-Masri et al. 2022*



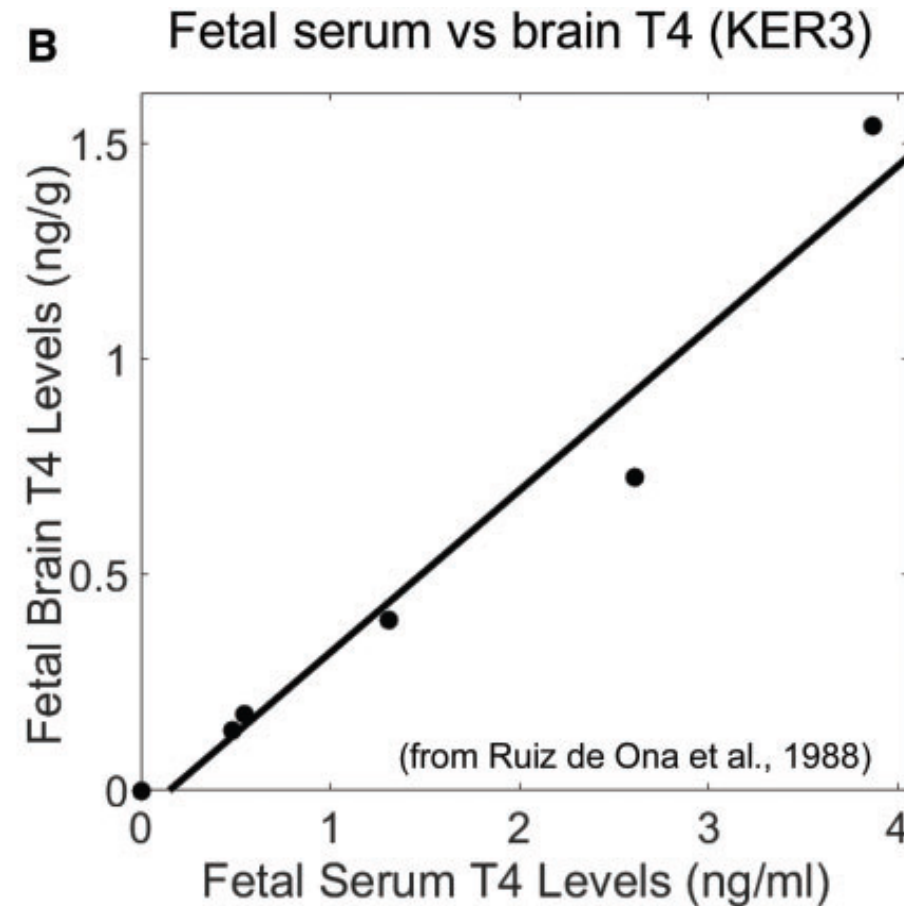
# Neurodevelopment and Thyroid Hormone Synthesis Inhibition in the Rat: Quantitative Adverse Outcome Pathway (qAOP) *Hassan et al. 2017*



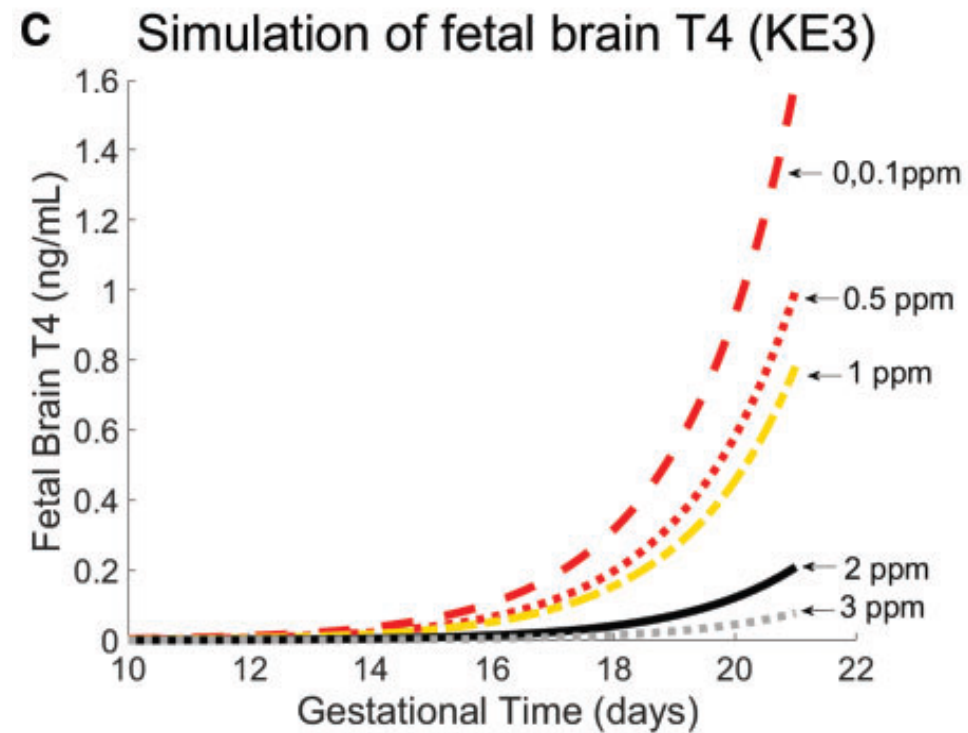
# Neurodevelopment and Thyroid Hormone Synthesis Inhibition in the Rat: Quantitative Adverse Outcome Pathway (qAOP) *Hassan et al. 2017*



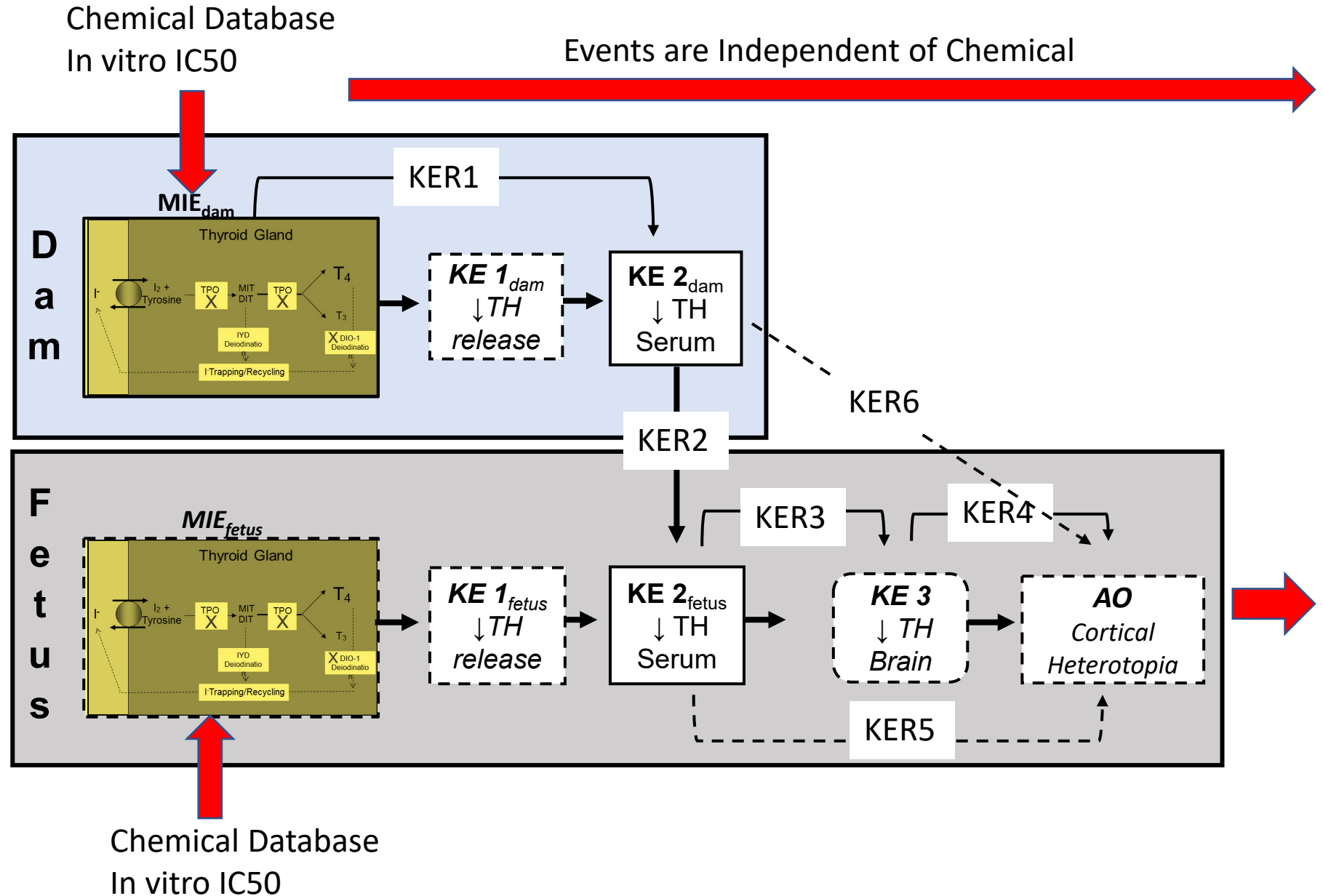
# Neurodevelopment and Thyroid Hormone Synthesis Inhibition in the Rat: Quantitative Adverse Outcome Pathway (qAOP) *Hassan et al. 2017*



# Neurodevelopment and Thyroid Hormone Synthesis Inhibition in the Rat: Quantitative Adverse Outcome Pathway (qAOP) *Hassan et al. 2017*



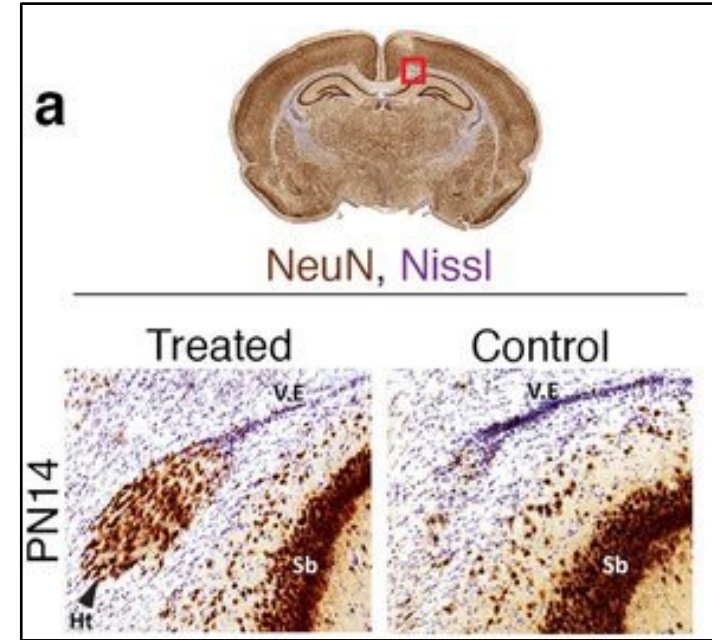
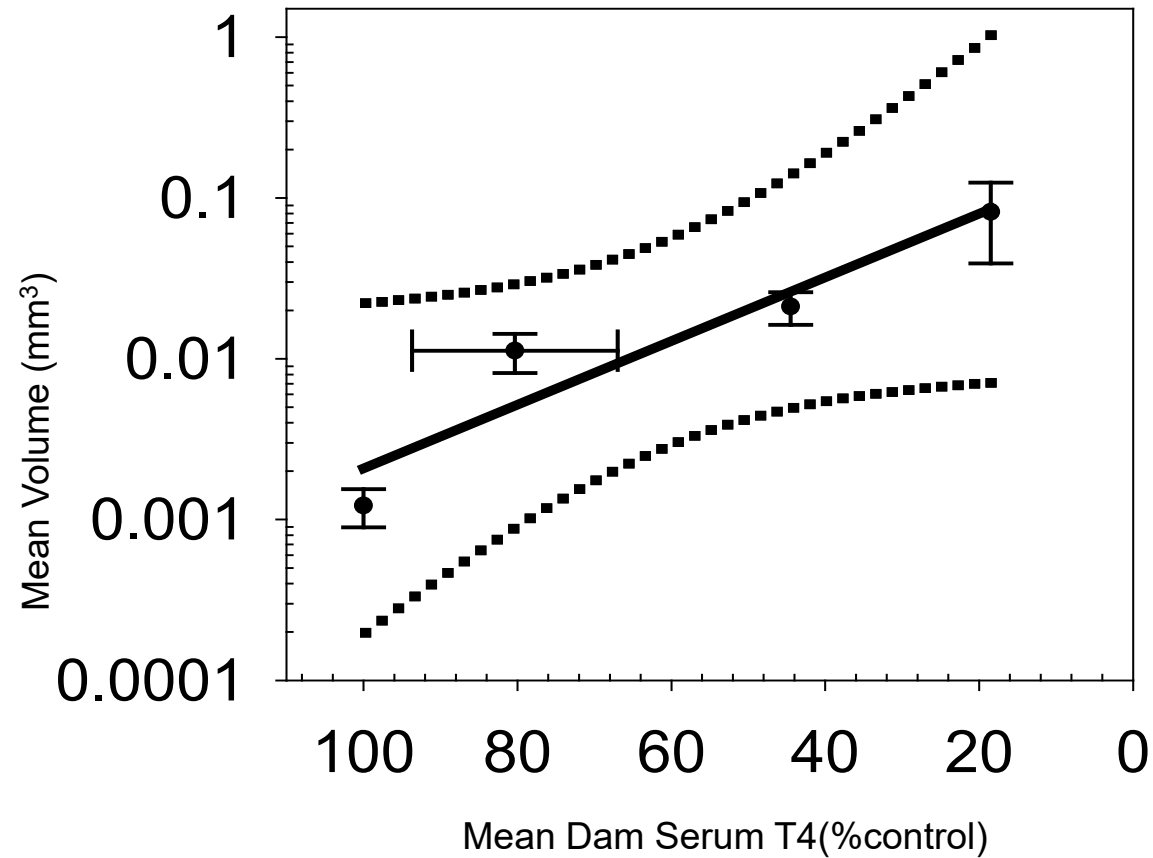
# Application of qAOP to Screen Chemicals





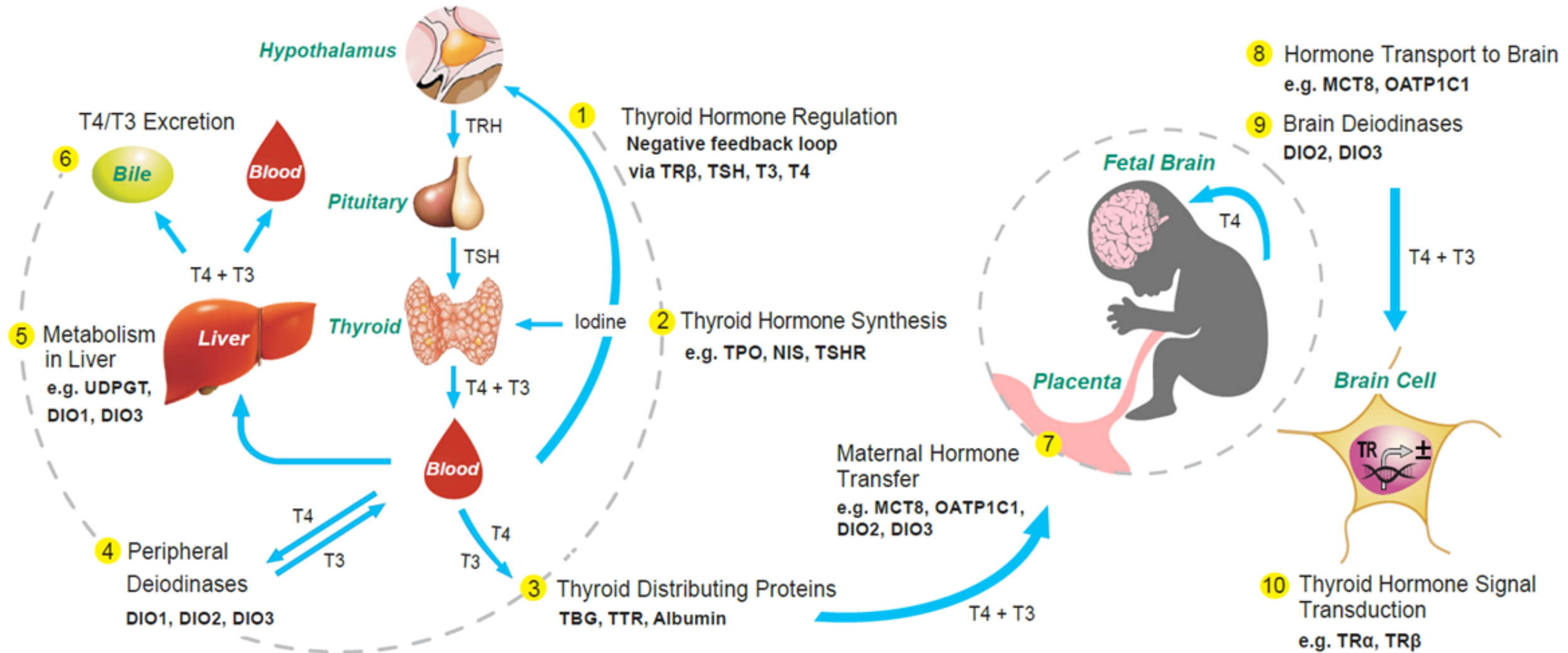
# Application of qAOP to Screen Chemicals

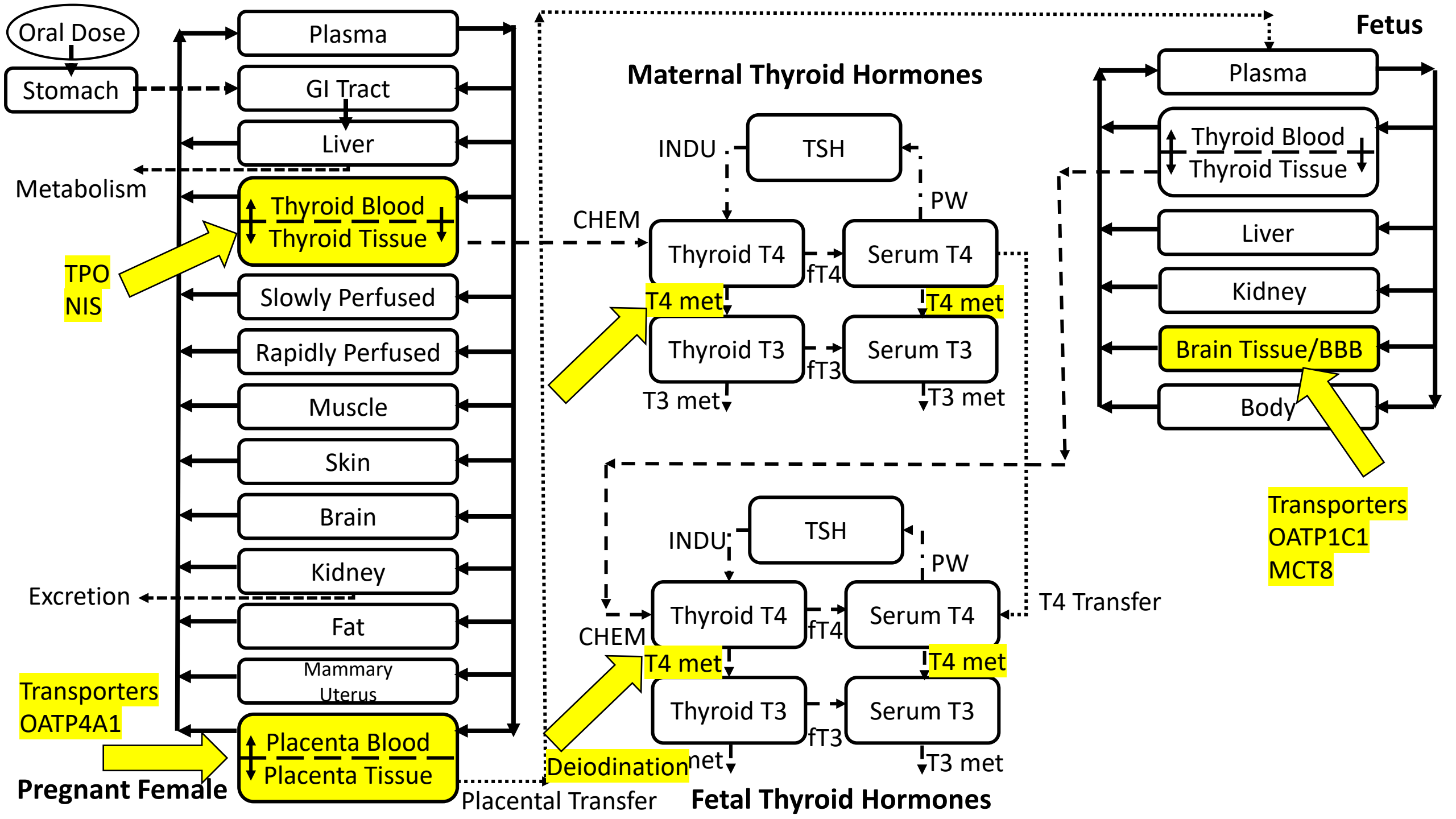
Brain Heterotopia Volume vs. Dam Serum Levels



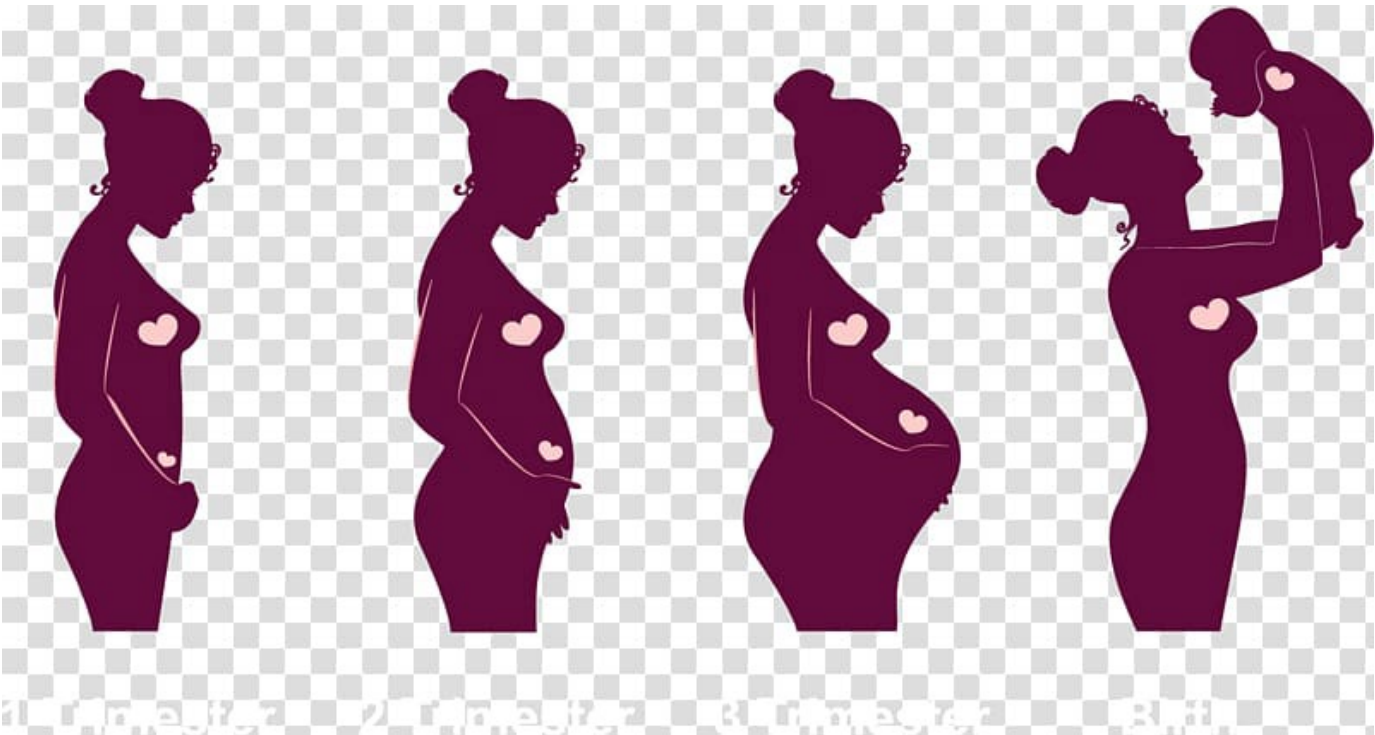
O'Shaughnessy et al. (2019)

# Sites of Interference for Thyroid Disrupting Chemicals





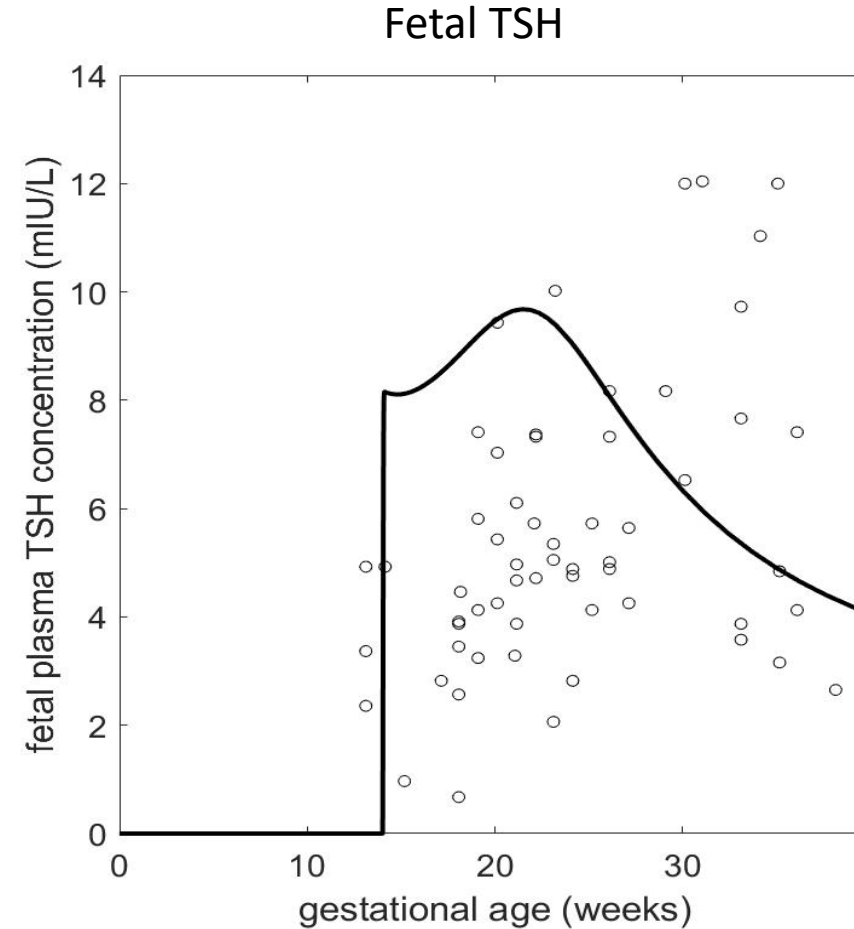
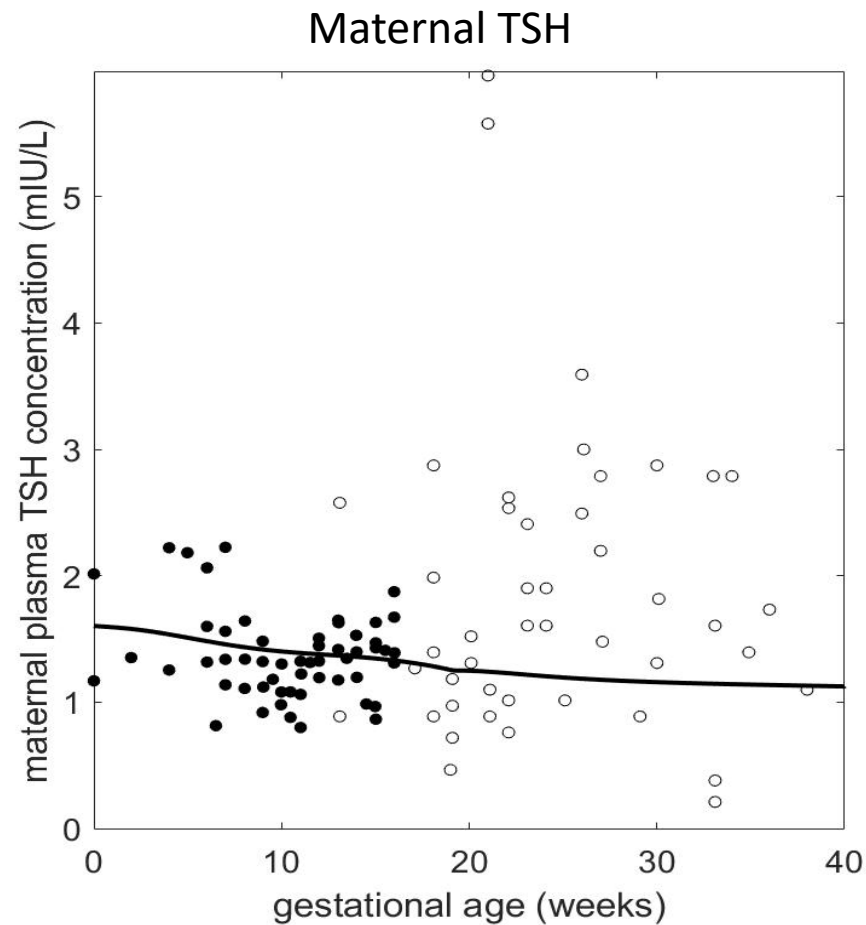
# Physiological Differences Between Humans and Rats



## hCG (*Human Chorionic Gonadotropin*)

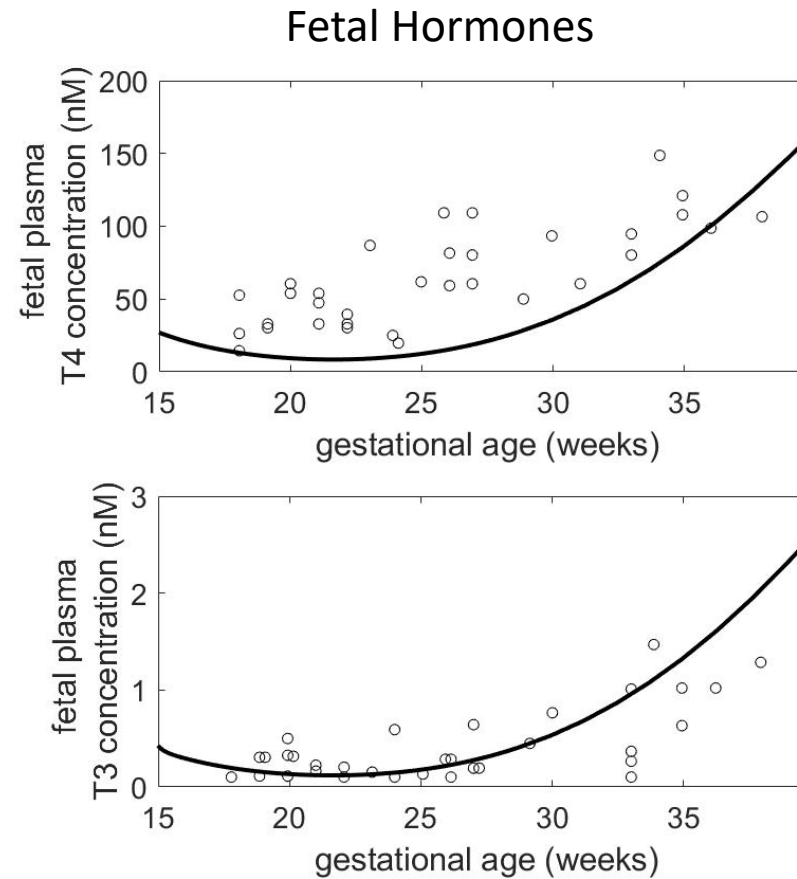
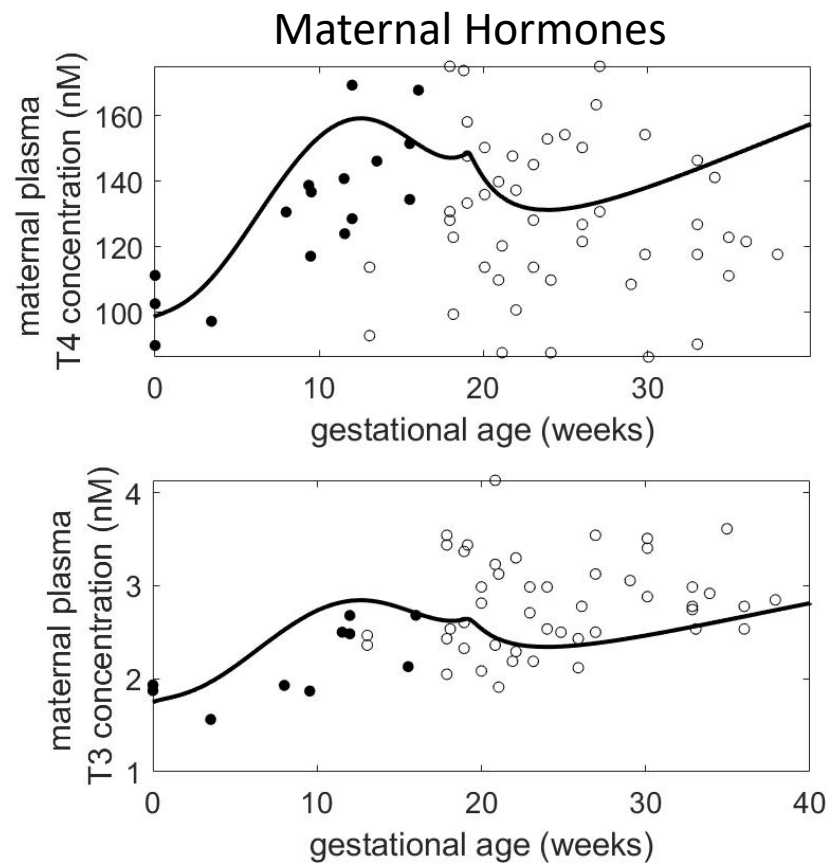
hCG levels during pregnancy (in weeks since last menstrual period)	
3 weeks LMP	5 - 50 mIU/ml
4 weeks LMP	5 - 426 mIU/ml
5 weeks LMP	18 - 7,340 mIU/ml
6 weeks LMP	1,080 - 56,500 mIU/ml
7 - 8 weeks LMP	7, 650 - 229,000 mIU/ml
9 - 12 weeks LMP	25,700 - 288,000 mIU/ml
13 - 16 weeks LMP	13,300 - 254,000 mIU/ml
17 - 24 weeks LMP	4,060 - 165,400 mIU/ml
25 - 40 weeks LMP	3,640 - 117,000 mIU/ml

# Model Simulations – Plasma TSH



Maternal (left) and fetal (right) plasma TSH concentrations.  
Closed circles represent data from Schlosser et al. 2017 and  
open circles are data digitized from Thorpe-Beeston et al. 1991

# Model Simulations – Plasma Thyroid Hormones



Maternal (top) and fetal (bottom) plasma TH concentrations. T4 (left) and T3 (right). Closed circles represent data from Schlosser et al. 2017 and open circles are data digitized from Thorpe-Beeston et al. 1991.

# Acknowledgment

## **Experimental Data Generation**

Mary Gilbert Lab

Tammy Stocker Lab

Chad Deisenroth Lab

## **Modeling and Simulations (ORISE)**

Sakshi Handa

Clara Bay

Rhylee Decrane

## **Analytical Chemistry**

Patricia Kosian, Sigmund Degitz

Denise MacMillan, Jermaine Ford, Amanda Brennan

## **Computational HT Assay**

Katie Paul-Friedman

## **CSS Research Program**

Aimen Farraj

Jill Franzosa

Rusty Thomas